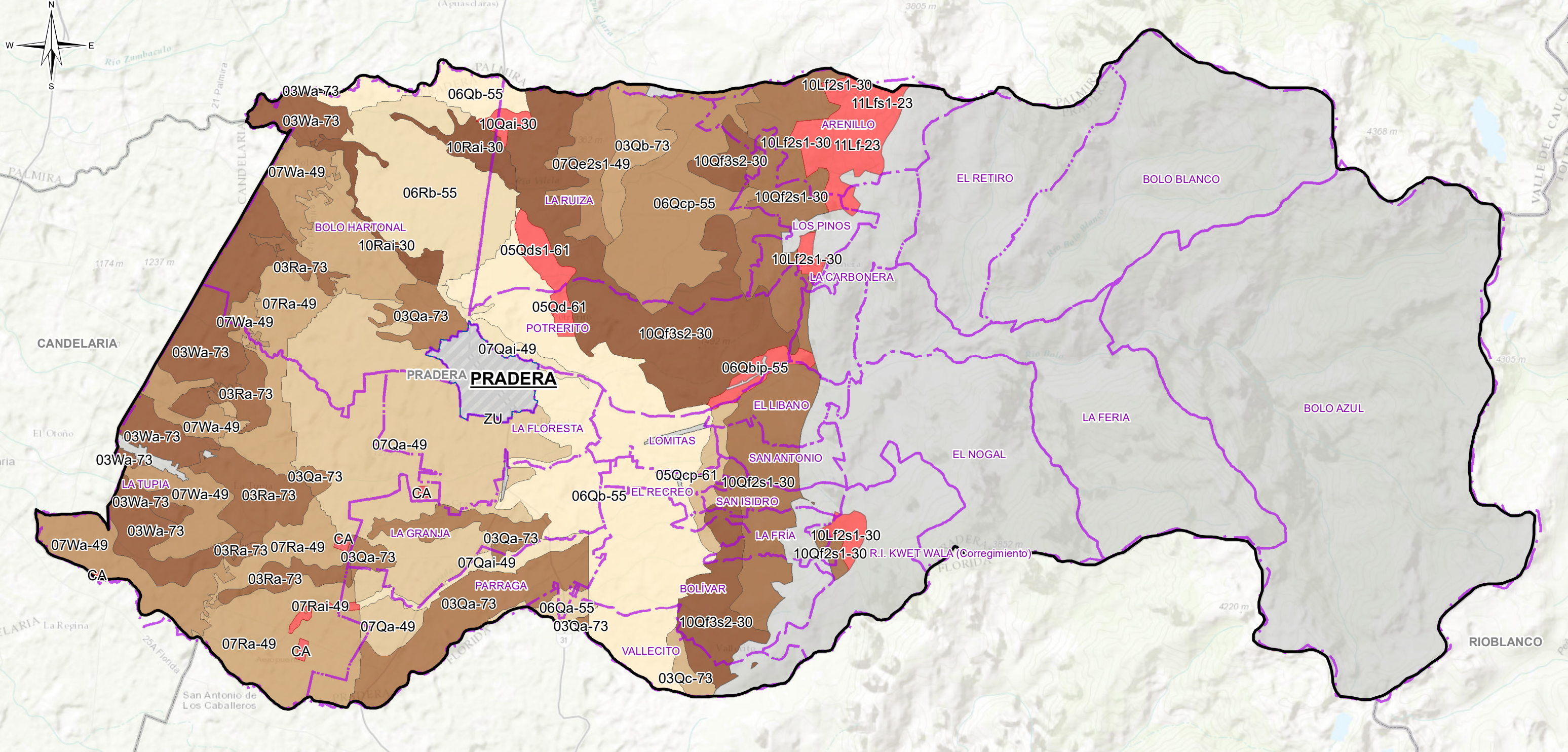
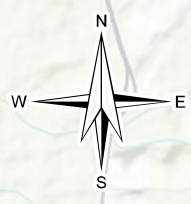
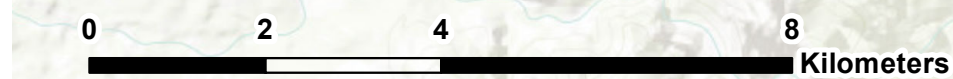




Mapa Área Mínima Rentable - Municipio de Pradera



Rango AMR en Has	1,1125-5,0526	1,2538-4,6701	1,301-4,7095	1,3701-5,0395	1,537-4,991	1,8504-5,2835	2,9016-3,4821	2,9331-3,5295	2,972-3,0804	2,9788-3,1418	2,9923-3,5829	4,3402-4,3722	Casco Urbano	
1,1642-4,59	1,1657-4,8289	1,1693-4,7069	1,1858-4,942	1,2345-4,7207	1,301-4,7095	1,3701-5,0395	1,537-4,991	1,8504-5,2835	2,9016-3,4821	2,9331-3,5295	2,972-3,0804	2,9788-3,1418	2,9923-3,5829	Pradera
1,1657-4,8289	1,1693-4,7069	1,1858-4,942	1,2345-4,7207	1,2538-4,6701	1,301-4,7095	1,3701-5,0395	1,537-4,991	1,8504-5,2835	2,9016-3,4821	2,9331-3,5295	2,972-3,0804	2,9788-3,1418	2,9923-3,5829	Inaplicabilidad
1,1657-4,8289	1,1693-4,7069	1,1858-4,942	1,2345-4,7207	1,2538-4,6701	1,301-4,7095	1,3701-5,0395	1,537-4,991	1,8504-5,2835	2,9016-3,4821	2,9331-3,5295	2,972-3,0804	2,9788-3,1418	2,9923-3,5829	UFH sin Rango AMR
1,1657-4,8289	1,1693-4,7069	1,1858-4,942	1,2345-4,7207	1,2538-4,6701	1,301-4,7095	1,3701-5,0395	1,537-4,991	1,8504-5,2835	2,9016-3,4821	2,9331-3,5295	2,972-3,0804	2,9788-3,1418	2,9923-3,5829	Corregimientos
1,1657-4,8289	1,1693-4,7069	1,1858-4,942	1,2345-4,7207	1,2538-4,6701	1,301-4,7095	1,3701-5,0395	1,537-4,991	1,8504-5,2835	2,9016-3,4821	2,9331-3,5295	2,972-3,0804	2,9788-3,1418	2,9923-3,5829	Limite_Municipal



EQUIPO TÉCNICO UAF MARZO DE 2023

